

Family Independence



February is **National Children's Dental Health Month**

Outcome Measures and Results February 2009

Definitions and Data Sources

Pages

TANF Cases (Total/Adult/Child Only)

Includes all cases active at some time during the month

Source: SUCCESS

1 - 2

Food Stamp Cases

Includes all cases active at some time during the month

Source: SUCCESS

3

Medicaid Cases

Includes case active at the end of the month

Source: SUCCESS

3

TANF Work Participation Rate

Of all the families with a Temporary Assistance to Needy Families (TANF) work requirement, the percentage of families that met the work requirement. **State Target: greater than or equal to 70%**

4

Food Stamp Participation Rate

The ratio of number of food stamp persons over the estimated persons at or below 125% of the poverty level. **State Target: greater than or equal to 59.65%**

Source: SUCCESS, US Census Bureau

4

Medicaid (ABD) Standard of Promptness

Of all the Aged, Blind, Disabled Medicaid applications for benefits, the percentage that was completed within the mandated Standard of Promptness (SOP). **State Target: greater than or equal to 96.0%**

Source: SUCCESS

5

Medicaid (Family) Standard of Promptness

Of all the Family Medicaid applications for benefits, the percentage that was completed within the mandated Standard of Promptness (SOP). **State Target: greater than or equal to 96.0%**

Source: SUCCESS

5

Food Stamp Unexpedited (Regular) Standard of Promptness

Of all the Unexpedited applications for benefits, the percentage that was completed within the mandated Standard of Promptness (SOP). **State Target: greater than or equal to 97.0%**

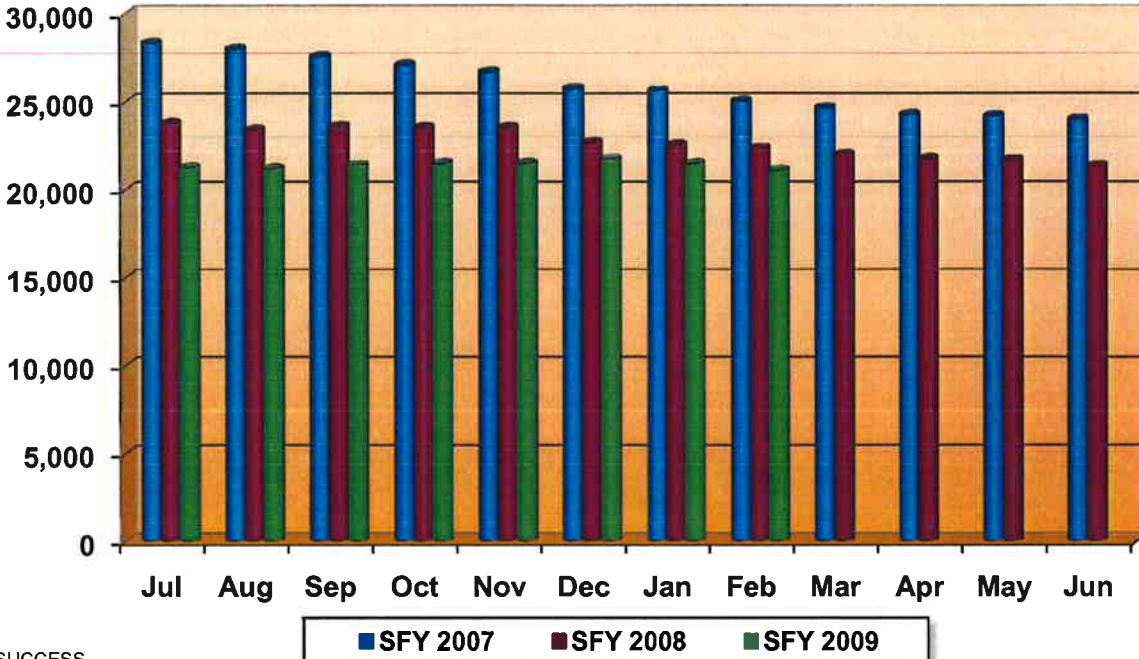
6

Food Stamp Expedited Standard of Promptness

Of all the Expedited applications for benefits, the percentage that was completed within the mandated Standard

6

TANF Cases

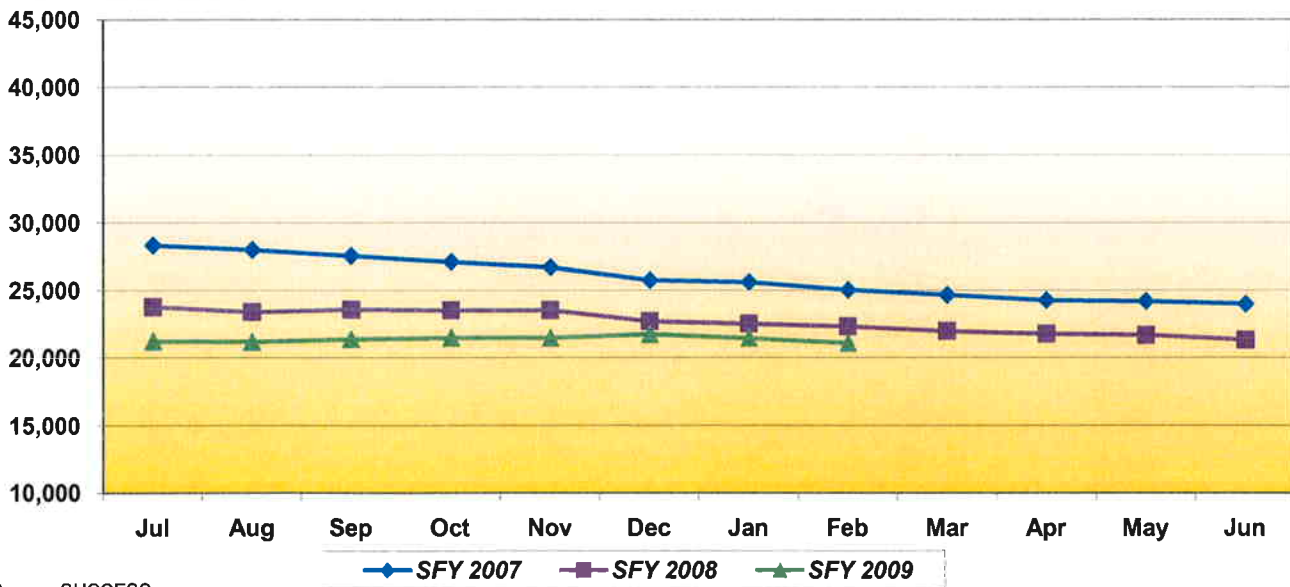


Source: SUCCESS

| Jul | Aug | Sep | Oct | Nov | Dec | Jan | Feb | Mar | Apr | May | Jun |
|--------|--------|--------|--------|--------|--------|--------|--------|--------|--------|--------|--------|
| 28,335 | 28,003 | 27,553 | 27,097 | 26,702 | 25,739 | 25,599 | 25,031 | 24,649 | 24,252 | 24,175 | 23,983 |
| 23,778 | 23,410 | 23,574 | 23,521 | 23,525 | 22,719 | 22,538 | 22,336 | 21,977 | 21,768 | 21,678 | 21,318 |
| 21,231 | 21,189 | 21,378 | 21,478 | 21,494 | 21,743 | 21,467 | 21,098 | | | | |

Note: Due to the Deficit Reduction Act (DRA) that reauthorized TANF, the caseload and work participation rates have been revised beginning October 2007. These changes impact the way in which adults are selected and the calculation of hours in some of the work activities.

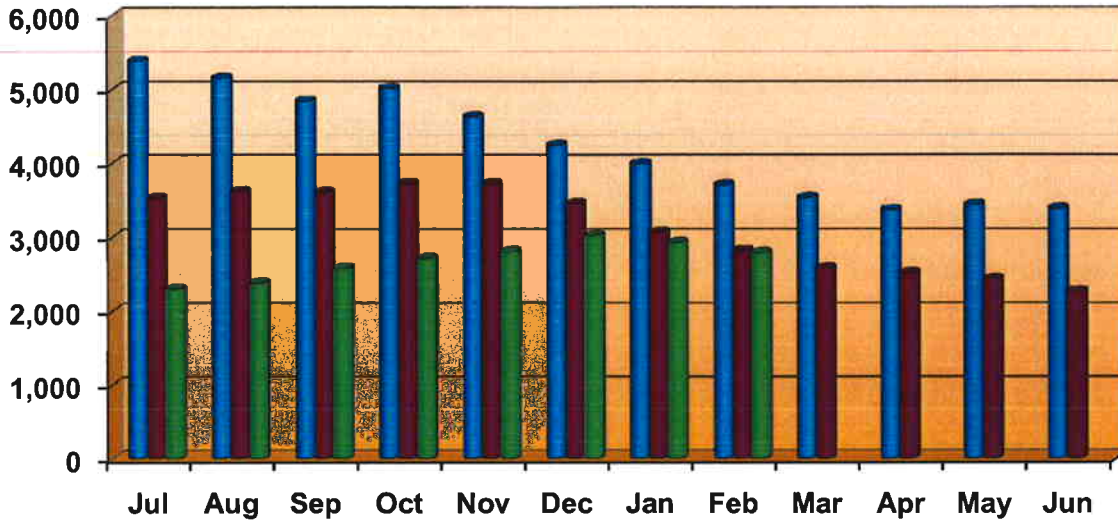
TANF Cases



Source: SUCCESS

| Jul | Aug | Sep | Oct | Nov | Dec | Jan | Feb | Mar | Apr | May | Jun |
|--------|--------|--------|--------|--------|--------|--------|--------|--------|--------|--------|--------|
| 28,335 | 28,003 | 27,553 | 27,097 | 26,702 | 25,739 | 25,599 | 25,031 | 24,649 | 24,252 | 24,175 | 23,983 |
| 23,778 | 23,410 | 23,574 | 23,521 | 23,525 | 22,719 | 22,538 | 22,336 | 21,977 | 21,768 | 21,678 | 21,318 |
| 21,231 | 21,189 | 21,378 | 21,478 | 21,494 | 21,743 | 21,467 | 21,098 | | | | |

TANF Cases - Adult



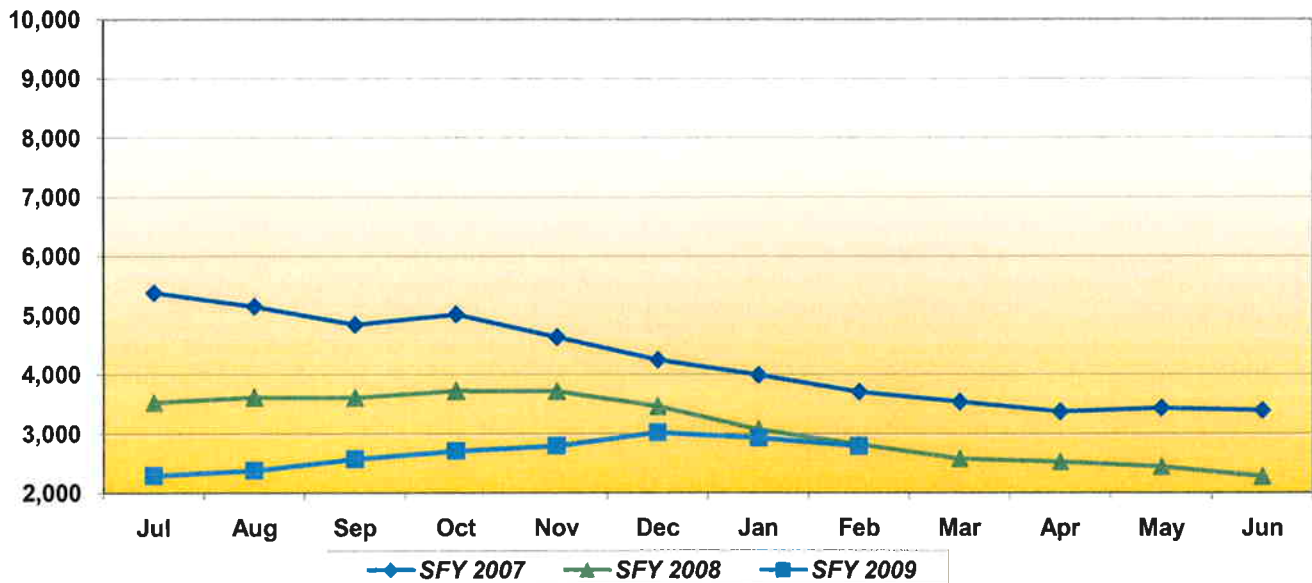
Source: SUCCESS

■ SFY 2007 ■ SFY 2008 ■ SFY 2009

| Jul | Aug | Sep | Oct | Nov | Dec | Jan | Feb | Mar | Apr | May | Jun |
|-------|-------|-------|-------|-------|-------|-------|-------|-------|-------|-------|-------|
| 5,386 | 5,152 | 4,844 | 5,018 | 4,635 | 4,250 | 3,994 | 3,707 | 3,539 | 3,372 | 3,434 | 3,392 |
| 3,530 | 3,615 | 3,611 | 3,722 | 3,718 | 3,461 | 3,069 | 2,819 | 2,576 | 2,521 | 2,439 | 2,273 |
| 2,297 | 2,378 | 2,571 | 2,709 | 2,795 | 3,019 | 2,928 | 2,788 | | | | |

Note: Due to the Deficit Reduction Act (DRA) that reauthorized TANF, the caseload and work participation rates have been revised beginning October 2007. These changes impact the way in which adults are selected and the calculation of hours in some of the work activities.

TANF Cases - Adult

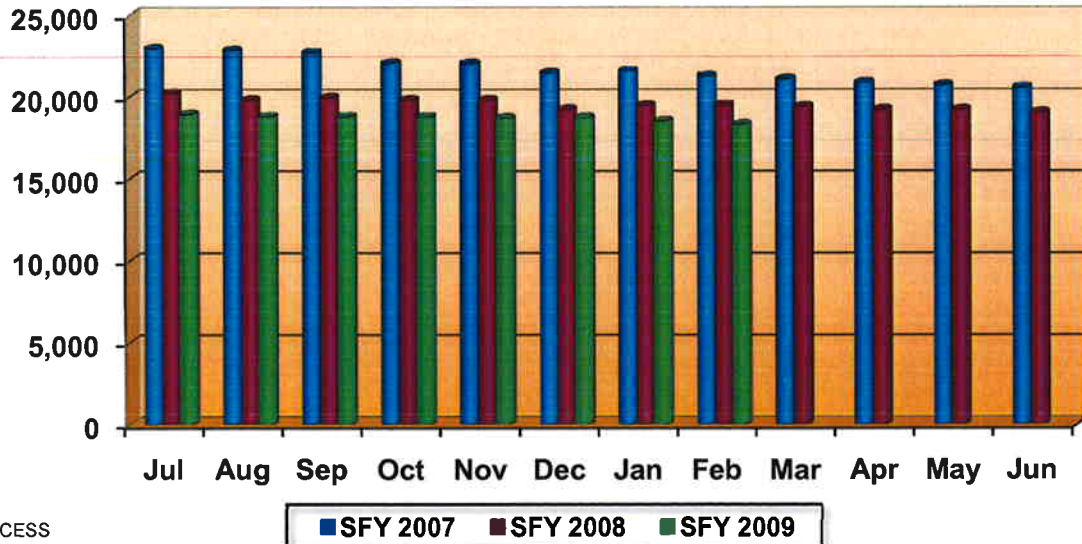


Source: SUCCESS

◆ SFY 2007 ▲ SFY 2008 ■ SFY 2009

| Jul | Aug | Sep | Oct | Nov | Dec | Jan | Feb | Mar | Apr | May | Jun |
|-------|-------|-------|-------|-------|-------|-------|-------|-------|-------|-------|-------|
| 5,386 | 5,152 | 4,844 | 5,018 | 4,635 | 4,250 | 3,994 | 3,707 | 3,539 | 3,372 | 3,434 | 3,392 |
| 3,530 | 3,615 | 3,611 | 3,722 | 3,718 | 3,461 | 3,069 | 2,819 | 2,576 | 2,521 | 2,439 | 2,273 |
| 2,297 | 2,378 | 2,571 | 2,709 | 2,795 | 3,019 | 2,928 | 2,788 | | | | |

TANF Cases - Child Only

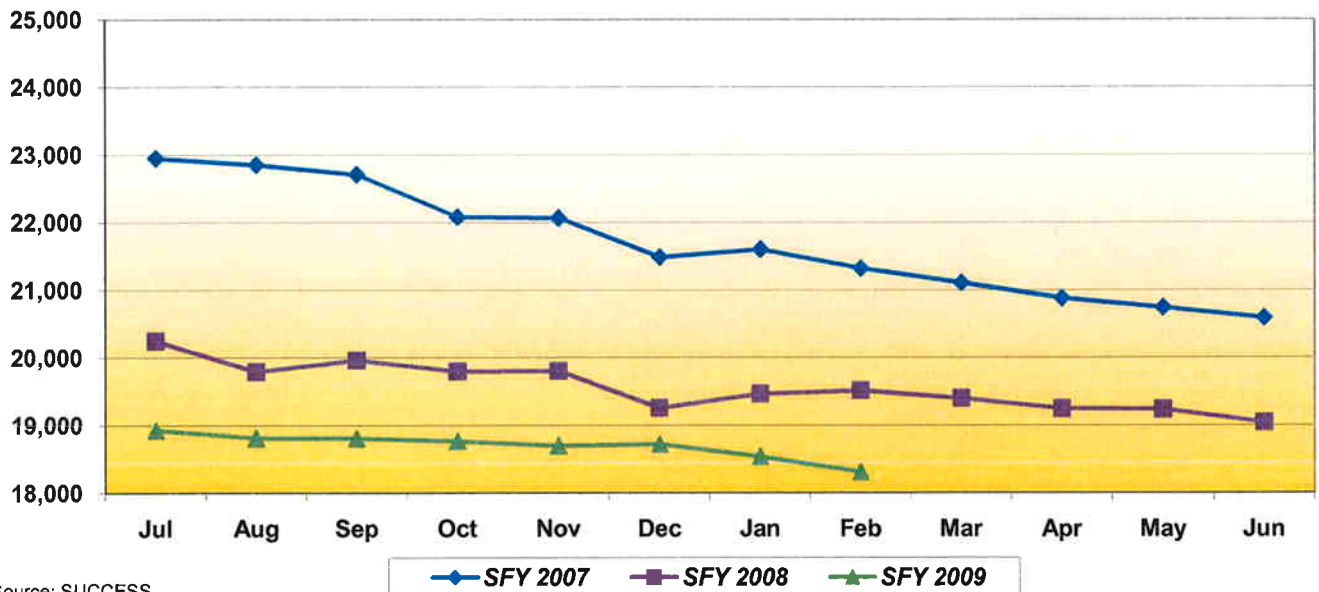


Source: SUCCESS

| Jul | Aug | Sep | Oct | Nov | Dec | Jan | Feb | Mar | Apr | May | Jun |
|--------|--------|--------|--------|--------|--------|--------|--------|--------|--------|--------|--------|
| 22,949 | 22,851 | 22,709 | 22,079 | 22,067 | 21,489 | 21,605 | 21,324 | 21,110 | 20,880 | 20,741 | 20,591 |
| 20,248 | 19,794 | 19,963 | 19,797 | 19,807 | 19,258 | 19,469 | 19,517 | 19,401 | 19,247 | 19,239 | 19,045 |
| 18,934 | 18,811 | 18,807 | 18,769 | 18,699 | 18,724 | 18,539 | 18,310 | | | | |

Note: Due to the Deficit Reduction Act (DRA) that reauthorized TANF, the caseload and work participation rates have been revised beginning October 2007. These changes impact the way in which adults are selected and the calculation of hours in some of the work activities.

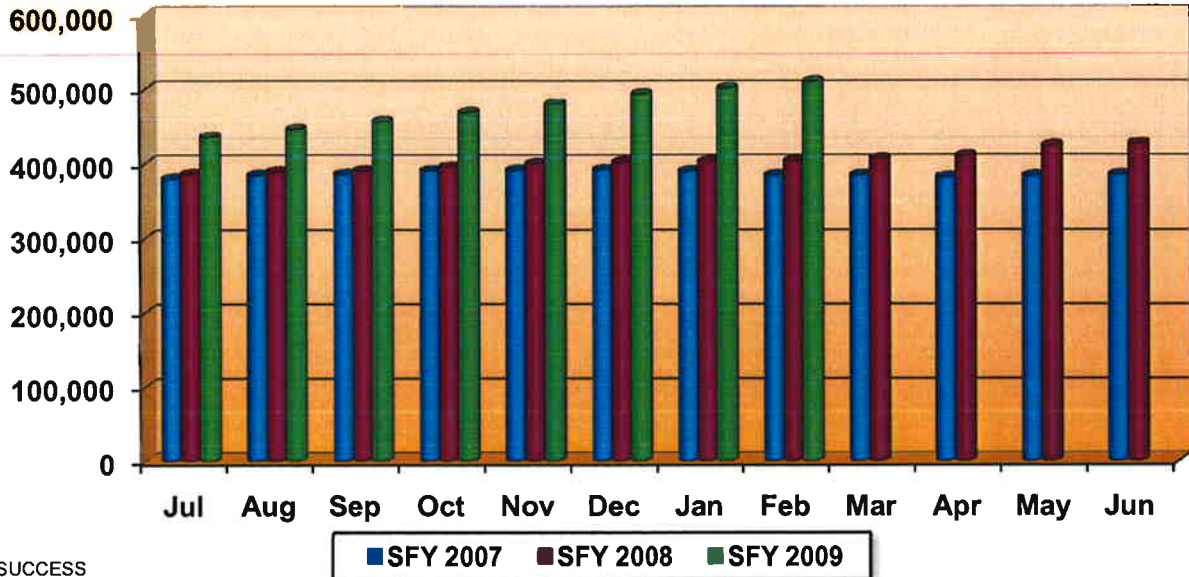
TANF Cases - Child Only



Source: SUCCESS

| Jul | Aug | Sep | Oct | Nov | Dec | Jan | Feb | Mar | Apr | May | Jun |
|--------|--------|--------|--------|--------|--------|--------|--------|--------|--------|--------|--------|
| 22,949 | 22,851 | 22,709 | 22,079 | 22,067 | 21,489 | 21,605 | 21,324 | 21,110 | 20,880 | 20,741 | 20,591 |
| 20,248 | 19,794 | 19,963 | 19,797 | 19,807 | 19,258 | 19,469 | 19,517 | 19,401 | 19,247 | 19,239 | 19,045 |
| 18,934 | 18,811 | 18,807 | 18,769 | 18,699 | 18,724 | 18,539 | 18,310 | | | | |

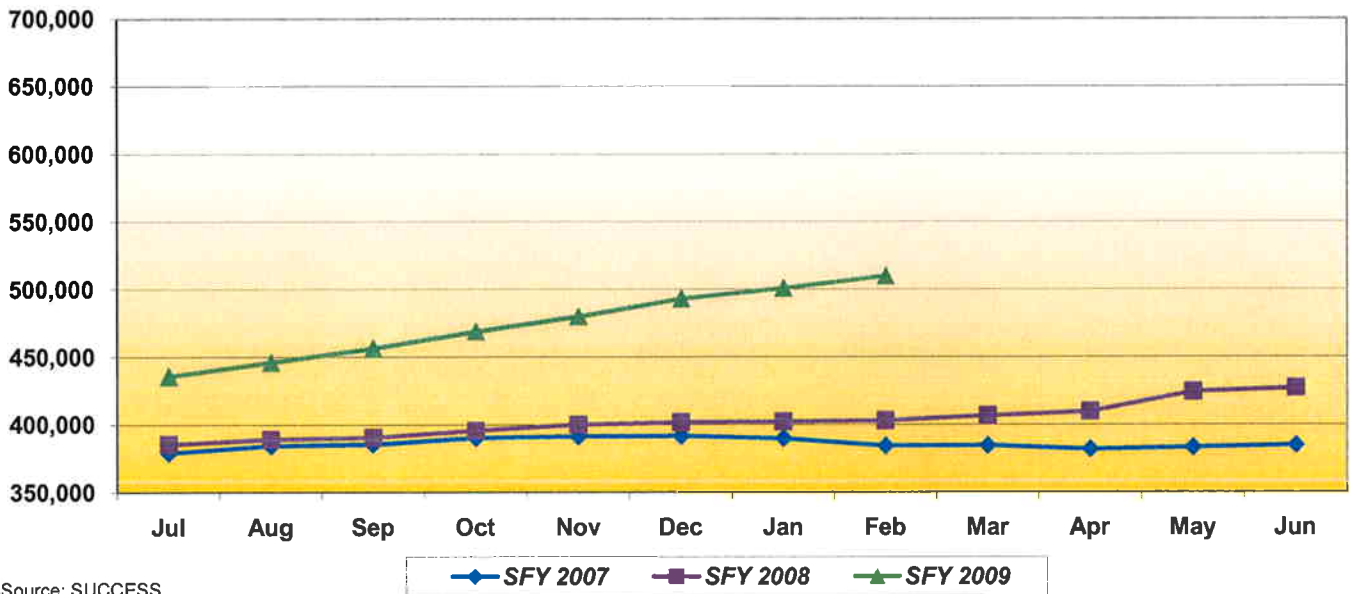
Food Stamp Cases



Source: SUCCESS

| Jul | Aug | Sep | Oct | Nov | Dec | Jan | Feb | Mar | Apr | May | Jun |
|---------|---------|---------|---------|---------|---------|---------|---------|---------|---------|---------|---------|
| 379,188 | 384,378 | 385,390 | 390,446 | 391,522 | 391,785 | 389,868 | 384,269 | 384,458 | 381,828 | 383,205 | 384,841 |
| 385,577 | 389,220 | 390,538 | 395,695 | 400,169 | 401,851 | 402,330 | 403,021 | 406,577 | 409,839 | 424,362 | 427,150 |
| 435,804 | 446,050 | 456,274 | 468,848 | 480,103 | 493,228 | 500,954 | 509,986 | | | | |

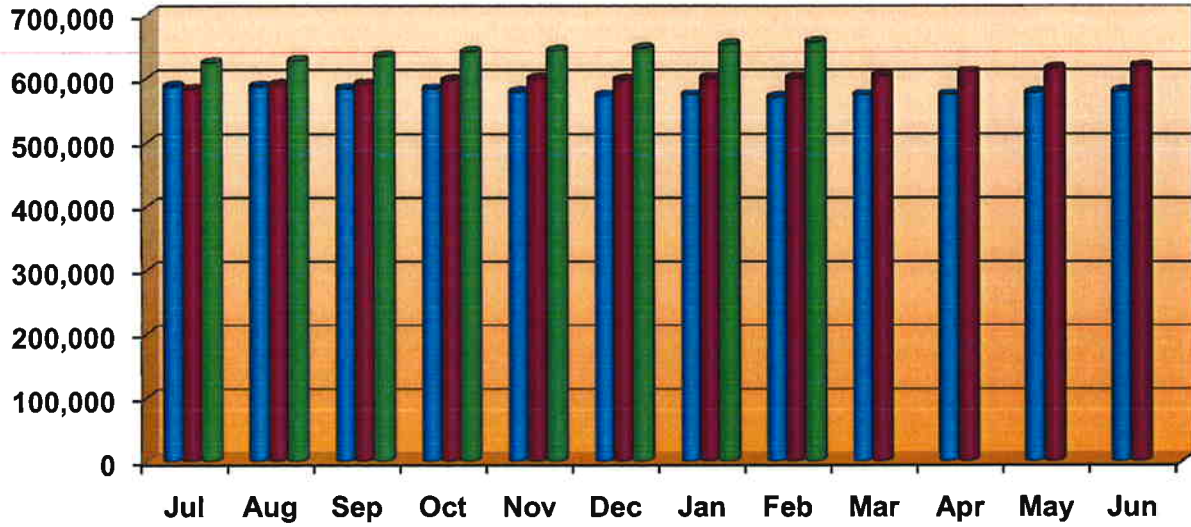
Food Stamp Cases



Source: SUCCESS

| Jul | Aug | Sep | Oct | Nov | Dec | Jan | Feb | Mar | Apr | May | Jun |
|---------|---------|---------|---------|---------|---------|---------|---------|---------|---------|---------|---------|
| 379,188 | 384,378 | 385,390 | 390,446 | 391,522 | 391,785 | 389,868 | 384,269 | 384,458 | 381,828 | 383,205 | 384,841 |
| 385,577 | 389,220 | 390,538 | 395,695 | 400,169 | 401,851 | 402,330 | 403,021 | 406,577 | 409,839 | 424,362 | 427,150 |
| 435,804 | 446,050 | 456,274 | 468,848 | 480,103 | 493,228 | 500,954 | 509,986 | | | | |

Medicaid Cases

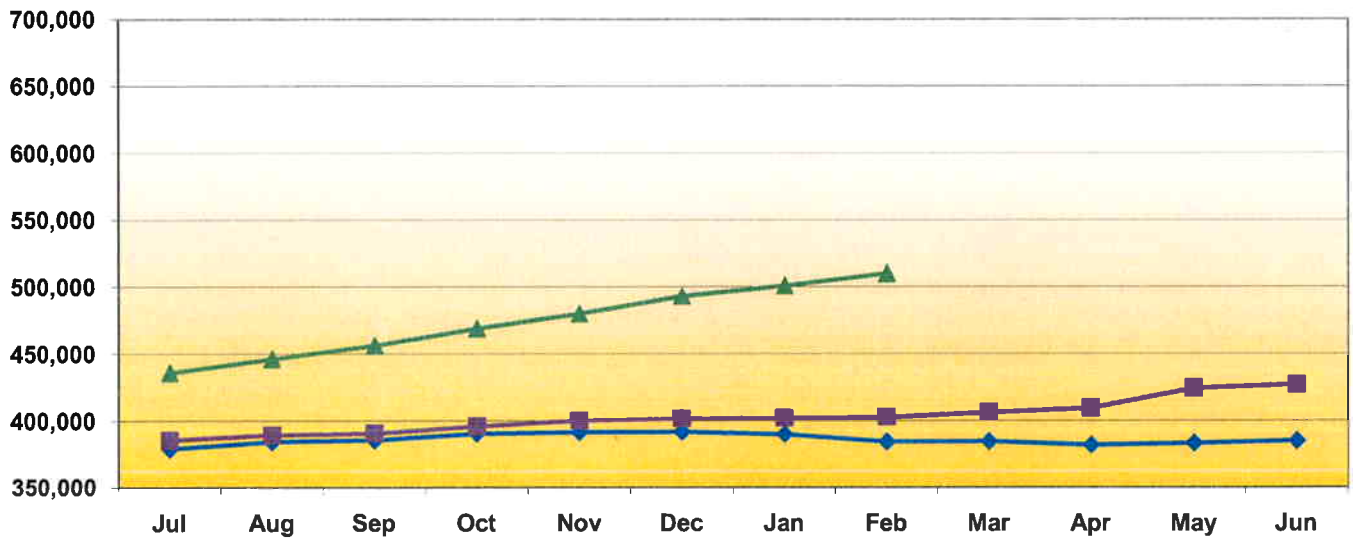


Source: SUCCESS

■ SFY 2007 ■ SFY 2008 ■ SFY 2009

| Jul | Aug | Sep | Oct | Nov | Dec | Jan | Feb | Mar | Apr | May | Jun |
|---------|---------|---------|---------|---------|---------|---------|---------|---------|---------|---------|---------|
| 587,810 | 587,558 | 583,754 | 583,110 | 578,746 | 572,899 | 573,893 | 570,641 | 573,712 | 574,492 | 577,984 | 579,952 |
| 583,218 | 589,831 | 591,259 | 597,221 | 599,518 | 597,777 | 600,739 | 600,890 | 604,355 | 609,750 | 615,327 | 619,436 |
| 624,150 | 627,369 | 634,654 | 641,789 | 643,827 | 647,760 | 652,838 | 657,302 | | | | |

Medicaid Cases



Source: SUCCESS

◆ SFY 2007 ■ SFY 2008 ▲ SFY 2009

| Jul | Aug | Sep | Oct | Nov | Dec | Jan | Feb | Mar | Apr | May | Jun |
|---------|---------|---------|---------|---------|---------|---------|---------|---------|---------|---------|---------|
| 379,188 | 384,378 | 385,390 | 390,446 | 391,522 | 391,785 | 389,868 | 384,269 | 384,458 | 381,828 | 383,205 | 384,841 |
| 385,577 | 389,220 | 390,538 | 395,695 | 400,169 | 401,851 | 402,330 | 403,021 | 406,577 | 409,839 | 424,362 | 427,150 |
| 435,804 | 446,050 | 456,274 | 468,848 | 480,103 | 493,228 | 500,954 | 509,986 | | | | |