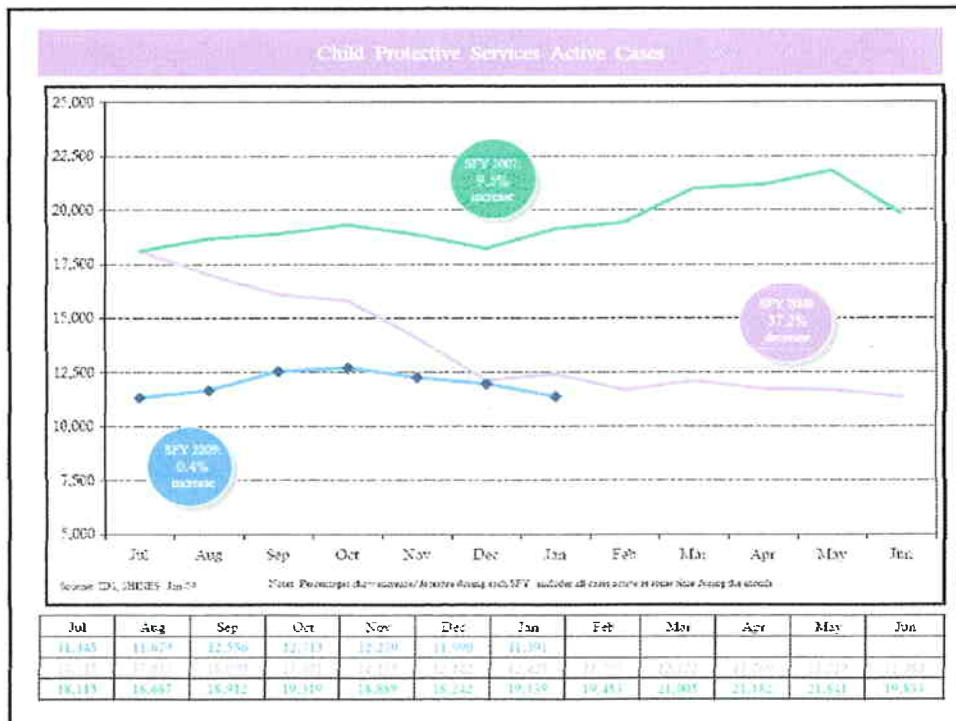
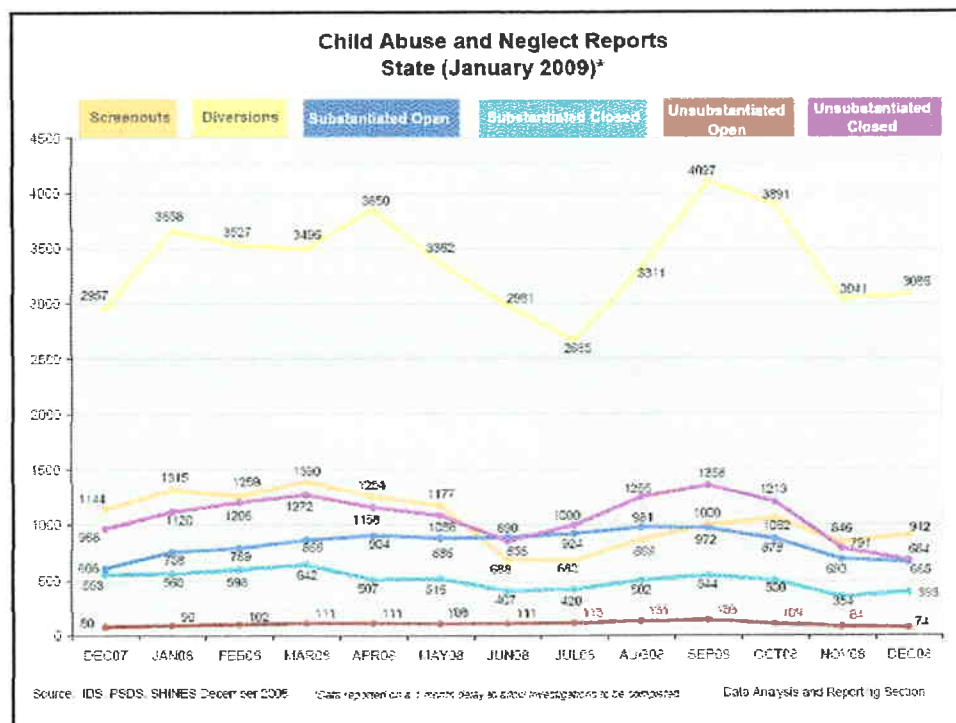
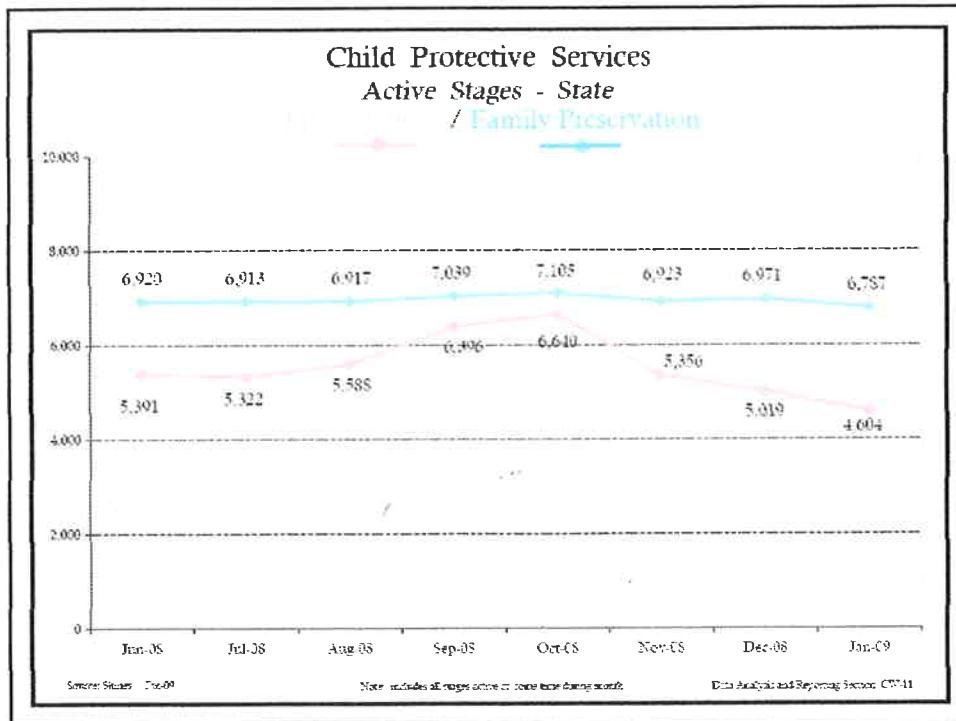


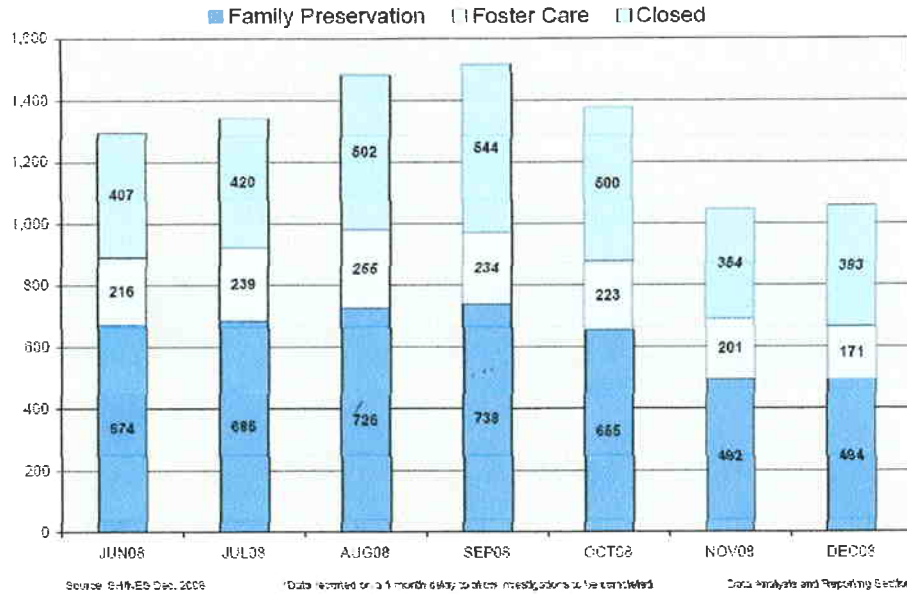
CHILDREN SAFE AND THRIVING WITH FOREVER FAMILIES, SOONER

**DIVISION OF FAMILY & CHILDREN SERVICES
G-FORCE MEETING
February 26, 2009**





Child Abuse and Neglect - Substantiated Investigations State (January 2009)*

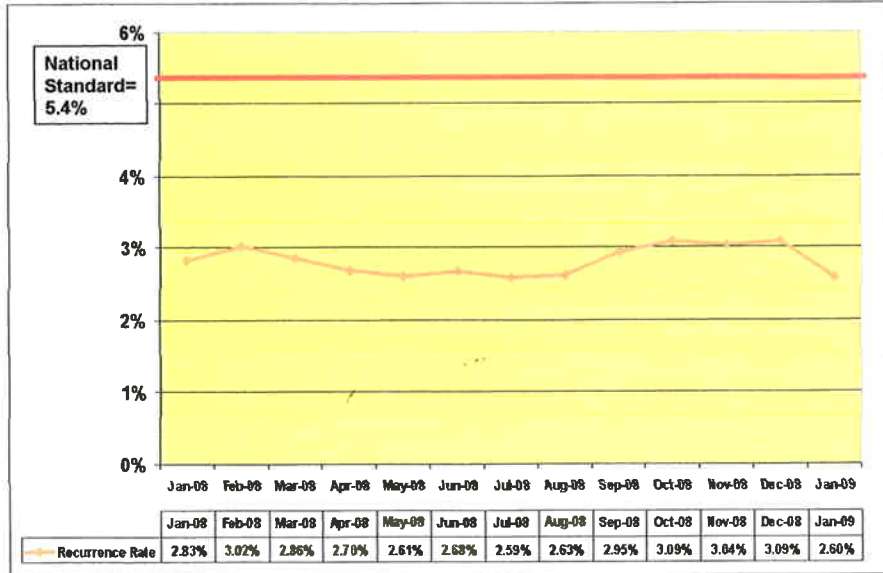


Children in Safety Resources

Definition - Average Length of Time in Days for Children in Safety Resources

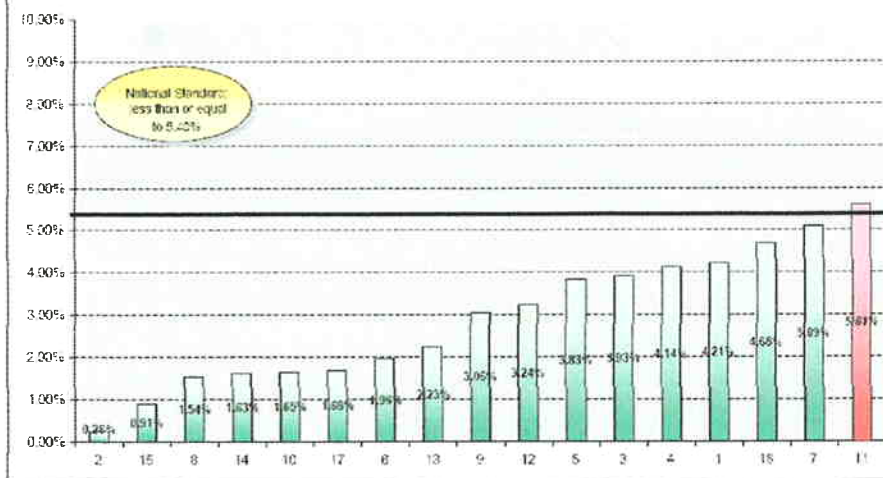


RECURRENCE OF MALTREATMENT



Recurrence of Maltreatment

Rolling Quarterly Average
November 2005 to January 2009



Source: SMHIES; PSCB

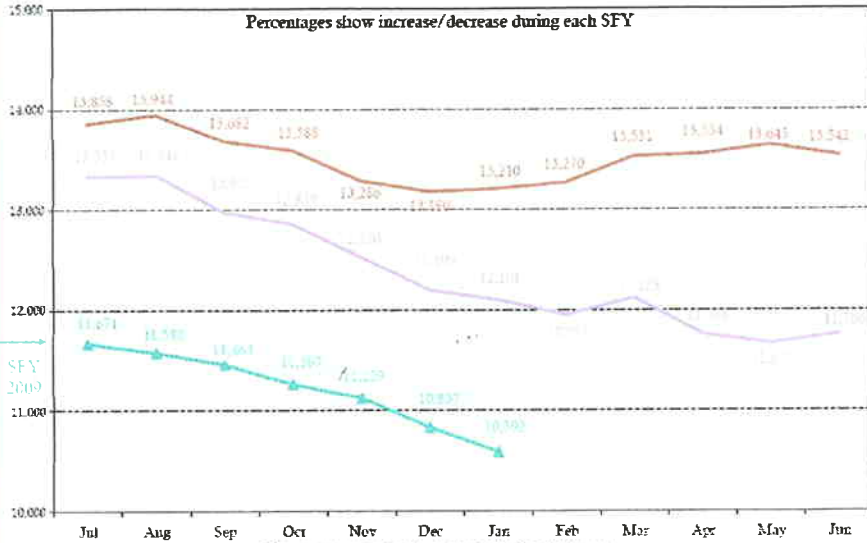
Note: The National Standard is a 5.40% rate of the number of recurrences per maltreatment case with a 90% CI.

Data Analysis and Reporting Section

Children in the Legal Custody of DFCS

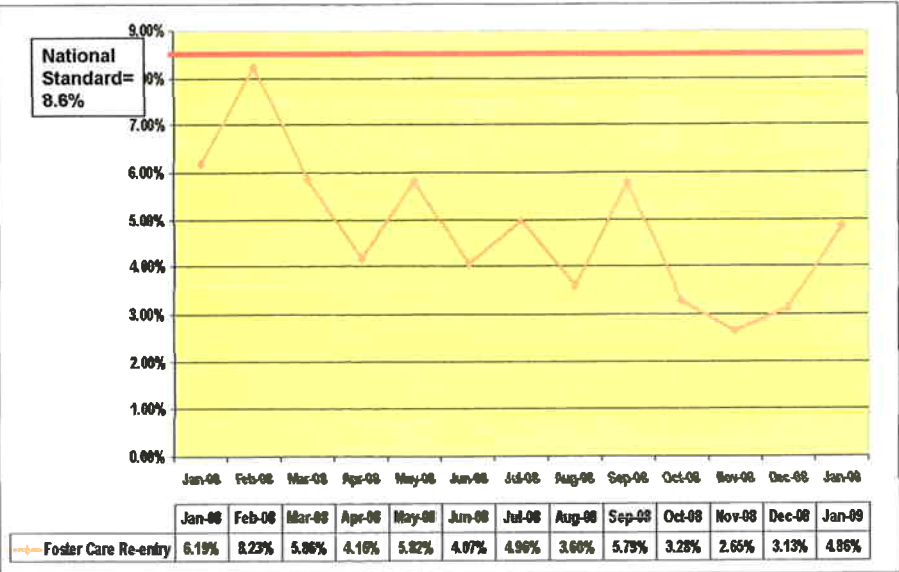
SFY 2007 SFY 2008 / SFY 2009

-2.3% -1.5% -9.2% ytd



Source: DCHS, Jan-09
 Note: includes all cases active at month time during month; excludes Adoptions
 DFCS Placement services to private, self-reporting County
 Data: Adoption and Reporting Services (AW)

FOSTER CARE RE-ENTRY RATE



Length of Time Between Beginning of FPR Case Until Foster Care Entry July – January 2009

Region	N	Mean Time (in days)	Median Time (in days)
1	111	162.7	103.0
2	62	138.9	120.0
3	166	235.4	99.0
4	89	193.6	165.0
5	66	178.0	135.0
6	68	251.5	125.0
7	40	169.2	98.0
8	41	92.0	59.0
9	25	141.6	108.0
10	22	393.2	262.0
11	60	312.9	194.0
12	48	163.0	94.5
13	89	188.4	112.0
14	95	136.3	113.0
15	25	126.4	100.0
16	30	240.6	198.0
17	74	193.4	139.0
Total	1,111	194.0	119.0

11

AGES OF CHILDREN WHEN ENTERING FOSTER CARE FROM FAMILY PRESERVATION

Region	TOTAL	AGE OF CHILD (IN YEARS)																	
		0	1	2	3	4	5	6	7	8	9	10	11	12	13	14	15	16	17
STATE	1111	170	102	84	76	73	66	59	51	42	48	39	36	29	24	26	17	21	20
1	111	14	15	5	5	9	4	4	8	7	3	2	6	4	7	0	5	5	1
2	62	4	4	10	4	3	3	5	4	6	3	2	3	0	3	3	3	1	1
3	166	21	14	20	15	5	12	8	8	9	7	6	4	4	8	5	8	10	2
4	89	14	8	11	4	5	2	2	5	5	3	2	6	1	6	2	9	5	1
5	66	4	7	5	5	5	5	2	2	5	1	0	2	1	6	3	6	4	3
6	68	14	7	1	6	5	1	6	3	2	5	4	4	2	3	1	3	0	1
7	40	4	2	5	5	4	3	3	3	3	2	1	2	2	1	0	0	0	0
8	41	8	4	1	3	2	4	2	3	3	1	1	2	3	1	1	0	1	1
9	25	8	3	2	2	0	0	0	1	2	2	1	0	1	0	0	1	2	0
10	22	4	3	1	0	1	0	0	1	3	1	0	2	1	1	0	2	2	0
11	60	16	9	9	2	4	2	1	2	2	3	2	1	3	0	2	1	1	0
12	48	8	4	4	8	1	1	6	3	1	1	1	0	2	4	1	3	0	0
13	89	17	8	10	6	6	3	6	2	5	2	4	5	1	4	3	4	3	2
14	95	17	8	6	5	9	3	7	1	7	2	6	3	4	2	5	5	4	3
15	25	4	3	1	1	2	2	3	0	1	2	1	1	0	1	1	1	0	1
16	30	8	5	2	1	3	0	0	1	1	0	2	1	2	2	0	1	0	1
17	74	5	5	1	3	9	1	4	4	0	8	4	6	5	5	3	5	3	3

12

% of CASES WITH FTM MEETINGS (Family Preservation Stage)

REGION	TOTAL CASES	CASES with FTMS	% of Cases with FTMs (Regionally)	% Of Cases with FTMs (Statewide)
1	56	18	32.14%	3.09%
2	33	18	54.55%	3.09%
3	92	59	64.13%	10.14%
4	50	37	74.00%	6.36%
5	36	22	61.11%	3.78%
6	42	26	61.90%	4.47%
7	20	14	70.00%	2.41%
8	16	11	68.75%	1.89%
9	15	13	86.67%	2.23%
10	15	13	86.67%	2.23%
11	30	20	66.67%	3.44%
12	24	17	70.83%	2.92%
13	40	28	70.00%	4.81%
14	43	27	62.79%	4.64%
15	14	11	78.57%	1.89%
16	15	10	66.67%	1.72%
17	41	27	65.85%	4.64%
STATE TOTAL	582	371	63.75%	63.75%

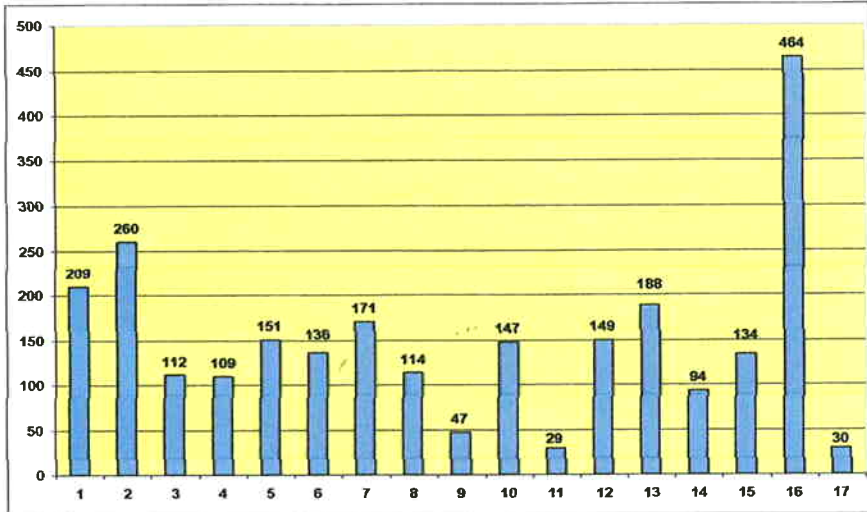
13

CHILDREN IN SAFETY RESOURCES - 30 DAYS PRIOR TO ENTRY

Region	N	Mean (Time in Days)	Median (Time in Days)
1	11	91	61
2	7	58	36
3	52	70	82
4	3	39	50
5	9	111	97
6	16	85	58
7	7	88	104
8	5	162	162
9	3	31	26
10	1	8	8
11	12	130	134
12	7	49	39
13	6	71	33
14	13	25	28
15	2	3	3
16	0	N/A	N/A
17	0	N/A	N/A
Total	154	74	60

14

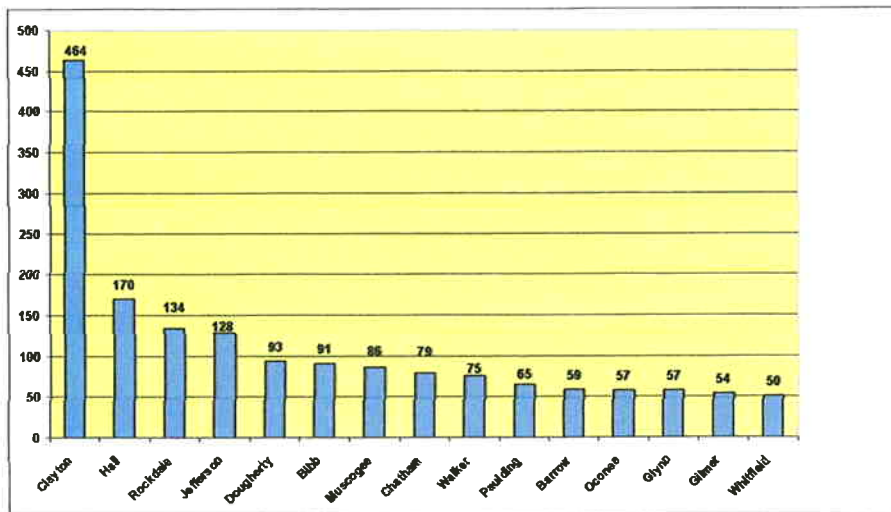
NUMBER OF ACCURINT SEARCHES BY REGION FOR JANUARY 2009



Note: Total of 2,544 searches statewide for January 2009.

15

COUNTIES ACCOUNTING FOR THE GREATEST UTILIZATION OF ACCURINT IN JANUARY 2009



These 15 counties account for 65% of the searches for January 2009.

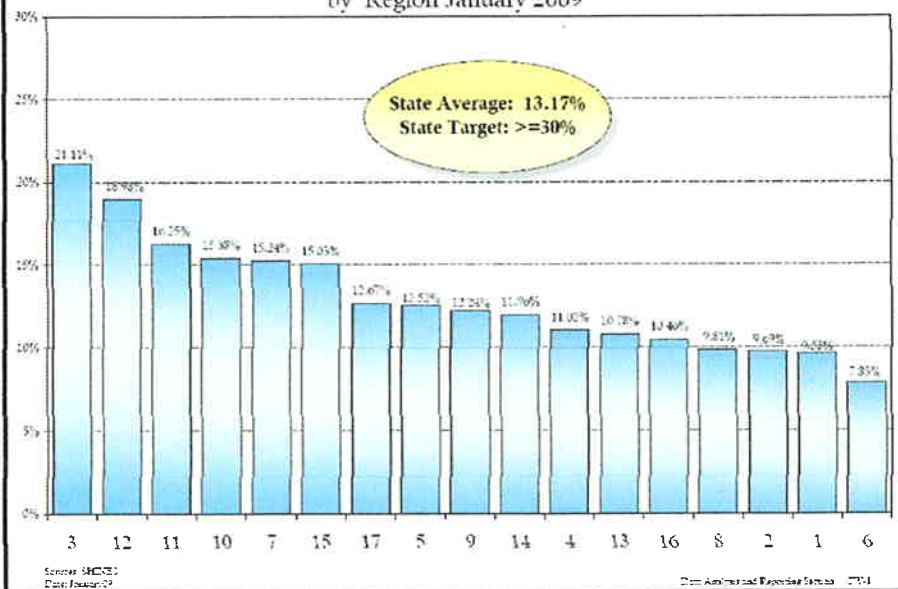
16

PERCENT OF CHILDREN PLACED WITH A RELATIVE

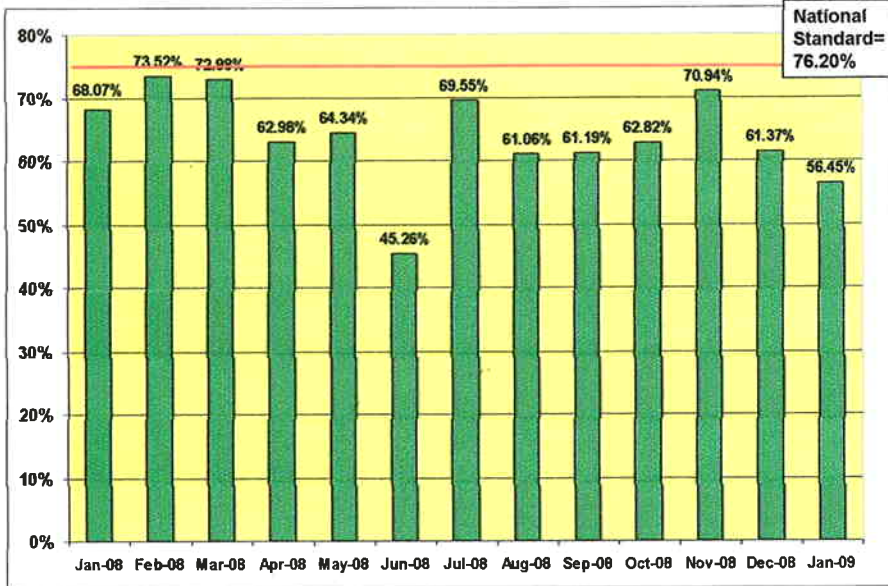


17

Child Welfare Children Placed with Relatives by Region January 2009

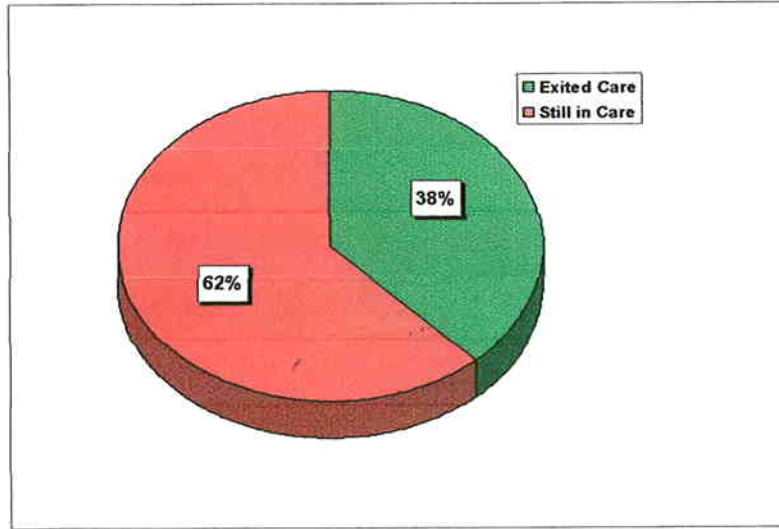


LENGTH OF TIME TO ACHIEVE REUNIFICATION



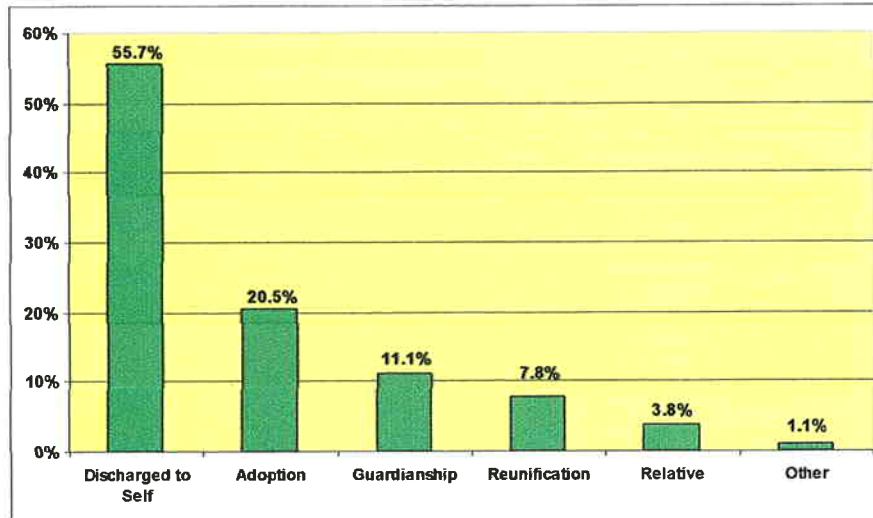
1,000 LONGEST STAYS FROM FEBRUARY 2008

STATUS OF 1,000 LONGEST STAYS *1/2008*
(As of January 2009)



21

DISCHARGE REASONS FOR 1,000 LONGEST STAYS



22

Goal - no child to "Age out"